

# PEAR™ S5591i

## Outdoor/In-Building Directional Antenna

[380-470/698-960/1695-2700 MHz]


**Description:**

Directional wall mount antenna for outdoor and in-building applications such as DAS. The antenna is vertically polarized and operates at 380-2700 MHz covering also the public safety frequency band for TETRA.


**Ordering & Antenna Options**

| Part Number    | Connector       | Description                    | Environmental    |
|----------------|-----------------|--------------------------------|------------------|
| 02121312-05591 | N-Type (F)      | PEAR™ S5591i                   | Indoor / Outdoor |
| 02125312-05591 | 4.1-9.5 DIN (F) | PEAR™ S5591i                   | Indoor / Outdoor |
| 02130312-05591 | 4.3-10 DIN (F)  | PEAR™ S5591i                   | Indoor / Outdoor |
| 62-29-03       |                 | 2-Axis Swivel Mounting Bracket |                  |

**Electrical Specifications**

| Frequency Band [MHz]        | 380-470  | 698-790       | 790-960 | 1695-2180      | 2180-2700 |
|-----------------------------|--|---------------|---------|----------------|-----------|
| <b>Input Connector Type</b> | N-Type or 4.3-10 DIN or 4.1-9.5 DIN Connector (F) with cable (12"/30cm length) |               |         |                |           |
| <b>Polarization</b>         | Vertical   |               |         |                |           |
| <b>Impedance</b>            | 50 Ω   |               |         |                |           |
| <b>VSWR/Return Loss</b>     | <3.7:1/4.8 dB  | <2.5:1/7.3 dB |         | <1.8:1/10.9 dB |           |
| <b>Gain</b>                 | 2.0 dBi  | 5.0 dBi       |         | 7.0 dBi        |           |
| <b>Vertical Beamwidth</b>   | >120°  | 80°           | 110°    | 70°            | 70°       |
| <b>Horizontal Beamwidth</b> | >120°  | 100°          | 100°    | 75°            | 75°       |
| <b>PIM @ 2x43 dBm</b>       | <-153 dBc for 4.3-10 DIN<br><-150 dBc for N-Type or 4.1-9.5 DIN                |               |         |                |           |
| <b>Input Power</b>          | 50 W at ambient temperature of 77° F (25° C)                                   |               |         |                |           |

Release Date: 14. July 2015; Revision: C; Patent Pending

### Mechanical Specifications

|                                       |   |
|---------------------------------------|---|
| <b>Operating Temperature</b>          | -67° to 158 °F (-55° to +70°C)            |
| <b>Environmental Conditions</b>       | Outdoor / Indoor                          |
| <b>Antenna Weight</b>                 | 13.22 lbs (600g)                          |
| <b>Antenna Dimensions (H x W x D)</b> | 10.2" x 8.0" x 2.5" (256 x 200 x 65 mm)   |
| <b>Flammability rating</b>            | UL 94-V0                                  |
| <b>RoHS</b>                           | Compliant                                 |
| <b>Radome Color</b>                   | RAL 9016 (white)*                         |
| <b>Outdoor Ingress Protection</b>     | IP65                                      |
| <b>Cable</b>                          | Plenum Rated                              |
| <b>Shipping Dimensions</b>            | 15.7" x 10.6" x 5.3" / 400 x 270 x 135 mm |
| <b>Shipping Weight (Gross Weight)</b> | 3.52 lbs (1.6 Kg)                         |

\* Radome can be painted with recommended paint "Krylon fusion for plastic"

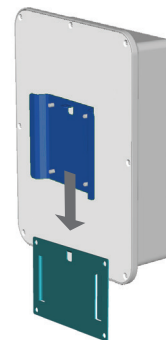
### Mounting Options

This antenna can be mounted using any of the following mounting brackets. Optional mounting brackets need to be ordered as a separate line item. See Ordering Options for details (see page 1).

#### Mounting Plate Installation (Standard)

After affixing the mounting plate to the wall, then mount the antenna on to the mounting plate by sliding it into the slots and securing it with the provided fasteners.

#### Included with antenna

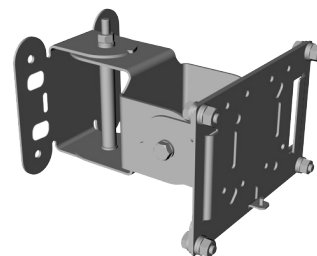


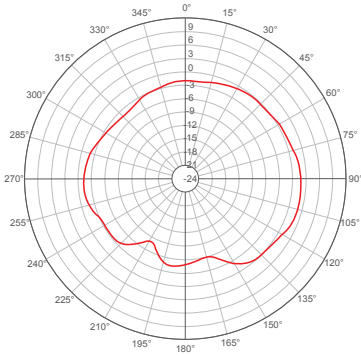
#### Optional Swivel Mounting Bracket

##### [Video Clip](#)

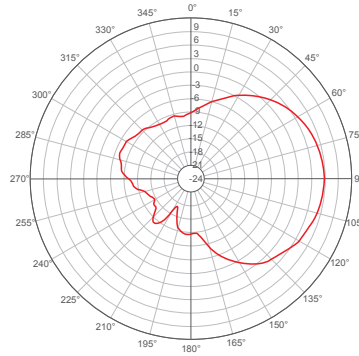
Galtronics swivel mounting bracket offers an easy installation solution to mount Galtronics' PEAR panel antennas to either a pole or a wall. The mounting bracket allows a tilt of up to +/-45deg in the horizontal as well as in the vertical plane.

**P/N: 62-29-03**

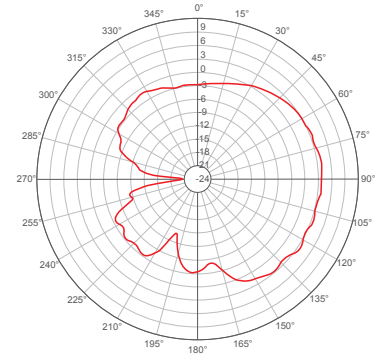




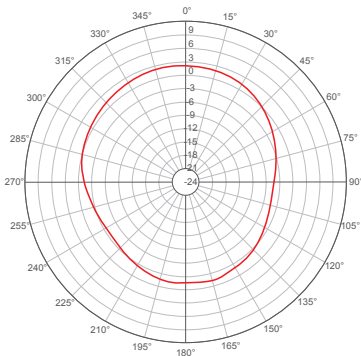
460 MHz



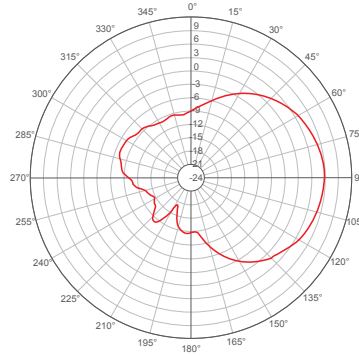
710 MHz



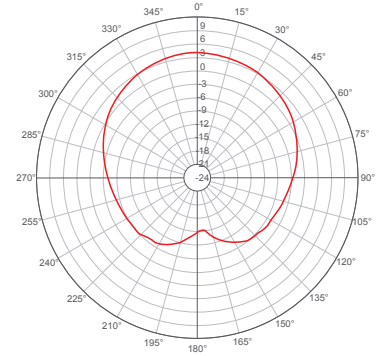
820 MHz



1730 MHz



2070 MHz



2500 MHz

